

## **ENVIRONMENTAL REPORT PERS CERTIFICATION RENEWAL**

### **Environmental Report**

Aiming to obtain the PERS Certification for second time, API Ensenada presents the Environmental Report with information facilitating the understanding of this port's relationship with the environmental aspects, information update tasks and actions carried out during these 2 years of the certification's validity; which will be available to the public for consult in the official webpage of the port of Ensenada.

The report is divided into six sections:

- a)** Description of the nature of the port activities:
- b)** Environmental Policy Statement:
- c)** Main identified environmental impacts and aspects identified of the Port of Ensenada.
- d)** API Ensenada's environmental management organization.
- e)** Environmental projects and good practices.
- f)** Contact information.

### **a) Description of the nature of the port activities:**

#### **Port's scope of action**

The scope of API Ensenada's environmental system applies to:

- Port Infrastructure Services.
- Port Services and
- Granting and follow up of Concession Agreements (Partial Granting of Rights and Obligations for the Rendering of Port Services).

#### **Clients**

API's clients are: naval agencies, concessionaire companies and services providers, as well as port users, cargo owners, that is, the parties receiving the service.

#### **Potential and Actual Area of Influence of the Ensenada - El Sauzal - Costa Azul Port System**

Port of Ensenada's area of influence encompasses the Mexican states of Baja California, Baja California Sur, Sonora and the U.S's states of Arizona, California and Nevada and features the following social-demographic and economic features and conditions.

Administración Portuaria Integral de Ensenada, S.A de C.V, hereinafter referred to as API Ensenada, has undertaken the tasks of producing the policy, service and managerial structure infrastructure required to position itself in a world class port service level.

API Ensenada operates with its own funds, thus attaining financial self-sufficiency resulting from the income from Concession Agreement (Partial Transfer of Rights) for the operation of areas and rendering of services as well as port fees for the usage of port infrastructure generated by the arrival of vessels.

API Ensenada fosters the communication and transport development and encourages Policies of Stability, Economic Growth, Integration, Development and Foreign Trade.

API Ensenada acknowledges the environmental and economic importance implied in the development of the abovementioned functions, and therefore, it proactively approaches its environmental responsibilities through a Quality and Environmental Management System, together with current and future clients, within normal and emergency operation conditions.

#### **Scope of the port's activities:**

In the following section the main activities performed in the Port of Ensenada are listed.

%	Main activities	Total:		Variation
	Volume	2016	2015	% vs 2015
39	Containerized Cargo	1,145	1,045	10
25	Ore Bulk	745.8	600	24
21	Agricultural Bulk	610	169	261
6	Loose bulk	183.2	93	96
6	Fluids	184	180	3
	<b>Commercial</b>	<b>2,869</b>	<b>2,086</b>	<b>37</b>
3	Fishing	78	82	-6
	<b>Total:</b>	<b>2,946</b>	<b>2,169</b>	<b>36</b>
	TEU	191,708	193,420	-1
	Passengers	650,225	684,716	-5

Regarding the movements of dry bulk material, limestone ore, barite, gypsum, stone, junk and wheat are handled in the port of Ensenada.

Regarding wet bulk material, the port handles coke fuel bulk and iron.

Regarding the arrival of cruise ships, 286 cruise ships were served in 2014, which positioned the port in the 1<sup>st</sup> rank in the Mexican Pacific area and in the 2<sup>nd</sup> rank nationwide serving cruise ships.

The following table shows the arrivals on the years 2015 and 2016.

Main activities	Total:	
Arrival	2016	2015
Containerized Cargo	207	205



Ore Bulk	187	144
Agricultural Bulk	17	4
Loose bulk	63	56
Fluids	3	3
Commercial	482	412
Fishing con cargo	3.813	4.078
Fishing sin cargo	5.143	4.924
<b>Sub total</b>	<b>9.438</b>	<b>9.414</b>
Cruise ships	258	277
<b>Total:</b>	<b>9.696</b>	<b>9.691</b>

## Jobs

API Ensenada has 72 directly retained people on its organizational structure.

Port service providers and related services:

<b>Hirings</b>	<b>2016</b>	<b>2015</b>
Port service providers and related services:	17	34
Related services	18	9

## Protected Natural Areas

The Port of Ensenada is located in the western coast of the Peninsula of Baja California, in the Pacific Ocean, Bahía de Todos Santos.

The nearest protected natural zone is the Estuary of Punta Banda. This is a small coastal lagoon located in the southeast area of Bahia de Todos Santos approximately 8 kilometers south of the Port of Ensenada. Therefore, there are no protected natural areas within API's area of influence.

## b) PERS Environmental Policy Statement:


Administración Portuaria Integral de Ensenada, S.A de C.V., in compliance of the PERS certification, states its environmental policy exclusivity for this certification. This policy has only been approved by the General Directorate of the Port of Ensenada.

It is important to mention that in a simultaneous manner, API Ensenada has an established Environmental Policy set forth by the Port and Merchant Navy Coordination Office through the General Directorate of Port Management and Development. Such Environmental Policy is documented and revised for its ongoing adaptation and, furthermore, its last revision is available for the public.

It must be mentioned that only this environmental Policy is shared by the other 16 APIs located throughout Mexico, and therefore it is a policy which is shared, reviewed, published and communicated jointly (the term used is "multisite"). This policy can be consulted in the official website of the Port of Ensenada.

<https://www.puertoensenada.com.mx/esps/0000130/politica-de-sgi>

We present below the PERS environmental policy.

Port of Ensenada Environmental Policy
Administración Portuaria Integral de Ensenada, S.A de C.V., undertakes the commitment to coordinate the use and exploitation of the public domain resources and infrastructure of the Federation to contribute to a long-term sustainable development by minimizing the atmosphere, earth and water emissions in all its operations, as well as giving compliance with the legislation and other environmental requirements. The activities and services are concentrated exclusively in the Port of Ensenada, as well as the environmental effects and impacts related to its activities.
 Héctor Bautista Mejía Director General of Administración Portuaria Integral de Ensenada, S.A de C.V.

The cows of the congruence of the PERS Environmental Report with the requirements of the Integrated Management System's requirements API Ensenada is subject to (as well as the rest of the APIs in Mexico), environmental compliance is based on the established procedures and programs, however, the PERS environmental compliance can be demonstrated with the following activities carried out by the Port of Ensenada aiming to minimize the environmental impacts related to its activities:

1. It has in place a suitable environmental management program focusing in pollution prevention and the preservation of the environment.
2. Compliance with the environmental legislation to which it is bound to.
3. Works to prevent environmental accidents and is prepared to decrease the effects of the accidents that might occur.
4. Efficient usage of resources and reduction in the usage of energy and raw material in proportion to the volume handled and control the carbon emissions.
5. Achieve active cooperation with clients, providers, authorities and other participants to achieve compliance with the environmental policy, as well as actively engage the local community and relevant organization in their environmental program.
6. Minimizes the negative environmental effects by collecting products for recycling.
7. Trains all employees on environmental topics and encourage them to preserve the environment in their daily work routine.
8. Reviews from time to time the Environmental Policy considering the environmental audits and the changes in the environment as they occur.



9. Achieve assurance in that the resources required for the implementation of the Environmental Policy are allocated.
10. Preparation of an Annual Report available for the public.

### **c) Main Environmental Impacts and Aspects of the Port of Ensenada.**

API Ensenada has an Environmental Aspects Identification and Assessment Procedure which purpose is to establish the methodology to determine and evaluate the environmental aspects related to the services and/or activities provided by Port of Ensenada, either directly or through third parties, on which the earlier has control, by identifying the significative aspects.

A table containing the record of significant environmental aspects and assigned classification derived from the methodology of registration and evaluation of environmental aspects is shown.

Registry of environmental aspects.		Administración Portuaria Integral de Ensenada, S.A de C.V.				
1	2	3	4	5	6	7
Reference #	Activity	Aspect	Impact	Person/organization in charge	Legal requirements and other requirements.	Observations
	<b>Operations Management</b>					
<b>1</b>	Infrastructure usage Safety activities in the port's access.	Electricity consumption	Scarcity of natural resources	API Ensenada - Deputy Management of Operations and Ecology	Mexican Rule NMX-SAA-14001-IMNC-2004/ISO 14001:2004	Port Facilities' shipped, unshipped vehicle and pedestrian entrance and departure point.
<b>2</b>	Port services/electricity supply	Electricity consumption	Scarcity of natural resources	API Ensenada - Deputy Management of Operations and Ecology	4 Mexican Rule NMX-SAA-14050-IMNC-2009/ISO 14050:2009	From the beginning of operation of the equipment until completion of service.
<b>3</b>	Port services/electricity supply	Risk of fire/explosion	Soil, water, and air pollution	API Ensenada - Deputy Management of Operations and Ecology	9 NMX Mexican Rule -R-025-SCFI-2012	From the beginning of operation of the equipment until completion of service.
<b>4</b>	Port services/electricity supply	Potential spill of hazardous waste.	Soil, water, and air pollution	API Ensenada - Deputy Management of Operations and Ecology	2012 NMX Mexican Rule -R-	From the beginning of operation of the equipment until completion of service.
<b>5</b>	Port services/electricity supply	Potential spill of hazardous material	Soil, water, and air pollution	API Ensenada - Deputy Management of		From the beginning of operation of the equipment until

				Operations and Ecology	025-SCFI-2012 Quality and Environmental Management System Manual API-SM-SGI-M-01 Record Control API-SM-SGI-P-02 Corrective and Preemptive Actions API-SM-SGI-P-05	completion of service.
	<b>API Ensenada-Engineering Management and Planning</b>					
<b>6</b>	- Construction and maintenance/Public Works	Generation of hazardous waste	Water, and air pollution	API Ensenada-Engineering Management and Planning	Mexican Rule NMX-SAA-14001-IMNC-2004/ISO 14001:2004 Mexican Rule NMX-SAA-14050-IMNC-2009/ISO 14050:2009 NMX Mexican Rule -R-025-SCFI-2012 NMX Mexican Rule -R-025-SCFI-2012 Quality and Environmental Management System Manual API-SM-SGI-M-01	Demolitions, dismantling, concrete-made buildings, concrete works, excavations, pavements, water proofing, etc.

					Record Control API-SM-SGI-P-02 Corrective and Preemptive Actions API-SM-SGI-P-05	
	<b>Administration and Finance Management</b>					
<b>7</b>	All process and critical activities/administrative activities in general.	Consumption of timber and derivatives	Scarcity of natural resources	Head of the Department of Ecology.	Mexican Rule NMX-SAA-14001-IMNC-2004/ISO 14001:2004	All the activities performed in API, the buildings and/or the warehouses.
<b>8</b>	All process and critical activities/administrative activities in general.	Electricity consumption	Scarcity of natural resources	Head of the Department of Ecology.	14001:2004 Mexican Rule NMX-SAA-14050-IMNC-2009/ISO 14050:2009 NMX Mexican Rule -R-025-SCFI-2012 NMX Mexican Rule -R-025-SCFI-2012 Quality and Environmental Management System Manual API-SM-SGI-M-01 Record Control API-SM-SGI-P-02 Corrective and Preemptive Actions API-SM-SGI-P-05	All the activities performed in API, the buildings and/or the warehouses.



For these environmental aspects, API Ensenada has established its Operational Control, Supervision and Measurement Plan as summarized in the table below.

Activity/Significative environmental aspect	Control and monitoring document/PGA	Operative Control
<b>Safety activities in the port's access</b> (Electricity consumption)	API's Resource Consumption and Waste Generation Log Records	<ul style="list-style-type: none"> <li>➤ Electricity measurement devices.</li> <li>➤ Awareness raising campaigns for the personnel (turning off screens, air conditioners, office light, etc.)</li> </ul>
<b>Electricity service</b> (consumption of electricity, fire or explosion potential, potential spill of hazardous waste, potential waste of hazardous material)	Preparation and emergency preparedness	<ul style="list-style-type: none"> <li>➤ Devices for handling urban solid wastes and hazardous wastes and substances, verify status of material and equipment.</li> <li>➤ Protective equipment and personnel's aptitude.</li> <li>➤ Training course for the personnel involved in the operative control</li> <li>➤ Orientation for contractors and service providers prior the beginning of the activity within the port.</li> </ul>
	Hazardous substances entrance and departure warning	<ul style="list-style-type: none"> <li>➤ Devices for handling urban solid wastes and hazardous wastes and substances, verify status of material and equipment.</li> <li>➤ Protective equipment and personnel's aptitude.</li> </ul>
	Hazardous Substances Handling Supervision List	<ul style="list-style-type: none"> <li>➤ Devices for handling urban solid wastes and hazardous wastes and substances, verify status of material and equipment. Protective equipment and personnel's aptitude.</li> </ul>
<b>Public works</b> (generation of hazardous waste)	Legal Requirement Compliance Verification	Legal Requirement Compliance Verify compliance and follow up.
	Surveillance and Supervision Protocol	<ul style="list-style-type: none"> <li>➤ Devices for handling urban solid wastes and hazardous wastes and substances, verify status of material and equipment. Protective equipment and personnel's aptitude.</li> <li>➤ Training courses for personnel to perform work before beginning of activities. On field operational control verification.</li> </ul>
	Hazardous substances handling and residual waters in the port	<ul style="list-style-type: none"> <li>➤ Devices for handling urban solid wastes and hazardous wastes and substances, verify status of material and equipment.</li> <li>➤ Protective equipment and personnel's aptitude.</li> </ul>
	Environmental requirements and safety requirements for providers and contractor	<ul style="list-style-type: none"> <li>➤ Devices for handling urban solid wastes and hazardous wastes and substances, verify status of material and equipment.</li> <li>➤ Protective equipment and personnel's aptitude.</li> </ul>
	Environmental Training and Competency.	Orientation/training courses
<b>General administrative activities</b> (Timber and derivatives consumption)	API's environmental compliance program	<ul style="list-style-type: none"> <li>➤ Electricity consumption measurement devices</li> <li>➤ Office paper usage, paper must contain at least 50% content of recycled material fiber and chlorine-free bleaching.</li> </ul>



		<ul style="list-style-type: none"> <li>➤ New acquisition of wood, furniture and office supplies of such material shall bear third party issued certificates registered with SEMARNAT certifying a sustainable usage of woods from which such acquisitions were extracted.</li> </ul>
	National Commission for the Efficient Usage of Energy.	<ul style="list-style-type: none"> <li>➤ Electricity measurement devices/movement sensors in offices and awareness raising in employees</li> </ul>
	Resource Consumption and Waste Generation Log Records	<ul style="list-style-type: none"> <li>➤ Electricity measurement devices.</li> <li>➤ Awareness raising campaigns for the personnel regarding the consumption of electricity (turn off screen, air conditioners, office light, etc.)</li> </ul>

On the other hand, there are also Environmental Aspects identified in the respective activities of each Concessionaire, as shown in the table below:

Registry of environmental aspects.		Administración Portuaria Integral de Ensenada, S.A de C.V.				
1	2	3	4	5	6	7
Referen ce #	Activity	Aspect	Impact	Person/organizati on in charge	Legal requirements and other requirements.	Observations
<b>1</b>	Piloting	Generation of hazardous waste	Water and soil pollution	Astilleros Progreso S.A de C.V. Baja Naval S.A de C.V. Gran Península S.A. de C.V. Grupo Peredia e Hijos S.A. de C.V Infraestructura y Servicios Portuarios S.A. de C.V Inmobiliaria Plaza Villa del Rio S.A. de C.V. Viajes NormaBere S.A. de C.V. Cruise Port Village S.A. de C.V.	NMX-SAA-14001-IMNC-2004/ISO 14001:2004 Mexican Rule NMX-SAA-14050-IMNC-2009/ISO 14050:2009 NMX Mexican Rule -R-025-SCFI-2012 NMX Mexican Rule -R-025-SCFI-2012 Quality and Environmental Management System Manual API-SM-SGI-M-01 Record Control API-SM-SGI-P-02 Corrective and Preemptive Actions API-SM-SGI-P-05	Usage of metal drums, drum tagging, delimitation of the storage areas. A specialized company authorized by SEMARNAT for the collection and final disposal of hazardous waste must be in charge of the gathering and final disposition of the hazardous wastes.
<b>2</b>	Towing	Production of solid urban residuals:	Water pollution	Astilleros Progreso S.A de C.V. Baja Naval S.A de C.V.	NMX-SAA-14001-IMNC-2004/ISO 14001:2004	Garbage storing, keeping maneuver areas clear, delimiting areas where garbage is

				Gran Península S.A. de C.V. Grupo Peredia e Hijos S.A. de C.V. Infraestructura y Servicios Portuarios S.A. de C.V.	Mexican Rule NMX-SAA-14050-IMNC-2009/ISO 14050:2009 NMX Mexican Rule -R-025-SCFI-2012 Mexican Rule NMX Mexican Rule -R-025-SCFI-2012 Quality and Environmental Management System Manual API-SM-SGI-M-01 Record Control API-SM-SGI-P-02 Corrective and Preemptive Actions API-SM-SGI-P-05	generated and collecting garbage generated in a weekly basis.
<b>3</b>	Provisioning	Gas emission	Air pollution	Astilleros Progreso S.A de C.V. Baja Naval S.A de C.V. Gran Península S.A. de C.V. Grupo Peredia e Hijos S.A. de C.V. Infraestructura y Servicios Portuarios S.A. de C.V. Inmobiliaria Plaza Villa del Rio S.A. de C.V. Viajes NormaBere S.A. de C.V. Ensenada Cruse Port Village S.A. de C.V.	NMX-SAA-14001-IMNC-2004/ISO 14001:2004 Mexican Rule NMX-SAA-14050-IMNC-2009/ISO 14050:2009 NMX Mexican Rule -R-025-SCFI-2012 NMX Mexican Rule -R-025-SCFI-2012 Quality and Environmental Management System Manual API-SM-SGI-M-01 Record Control API-SM-SGI-P-02 Corrective and Preemptive Actions API-SM-SGI-P-05	Industrial gases must be transported in cylinders or tanks in good condition and must be placed in fixed structures properly secured. Lubricants, fuels and chemicals must be stored and transported in tanks, appropriate extinguishing equipment must always be available and cleaning equipment must be available in the area.
<b>4</b>	Fuel supply	Potential generation of hazardous material and wastes	Water and air pollution	Baja Naval S.A. de C.V. Inmobiliaria Plaza Villa del Rio S.A. de C.V.	NMX-SAA-14001-IMNC-2004/ISO 14001:2004 Mexican Rule NMX-SAA-	Usage of metal drums, drum tagging, delimitation of the storage areas. A specialized company authorized by

				Viajes NormaBere S.A. de C.V. Ensenada Cruse Port Village S.A. de C.V. Petros del Pacifico S.A. de C.V. Distribuidora Dagal S.A. de C.V.	14050-IMNC-2009/ISO 14050:2009 NMX Mexican Rule -R-025-SCFI-2012 NMX Mexican Rule -R-025-SCFI-2012 Quality and Environmental Management System Manual API-SM-SGI-M-01 Record Control API-SM-SGI-P-02 Corrective and Preemptive Actions API-SM-SGI-P-05	SEMARNAT for the collection and final disposal of hazardous waste must be in charge of the gathering and final disposition of the hazardous wastes. Industrial gases must be transported in cylinders or tanks in good condition and must be placed in fixed structures properly secured. Lubricants, fuels and chemicals must be stored and transported in tanks, appropriate extinguishing equipment must always be available and cleaning equipment must be available in the area.
5	Trash collection	Production of solid urban and special handling wastes and consumption of electricity	Water and pollution and scarcity of natural resources	Astilleros Progreso S.A de C.V. Baja Naval S.A de C.V. Gran Península S.A. de C.V. Grupo Peredia e Hijos S.A. de C.V. Infraestructura y Servicios Portuarios S.A. de C.V. Inmobiliaria Plaza Villa del Rio S.A. de C.V. Viajes NormaBere S.A. de C.V. Ensenada Cruse Port Village S.A. de C.V. Acuicultura Integral de Baja California S.A. de C.V. Agencia Arjona S.A. de C.V. Baja Aqua Farms S.A de C.V. Cemex S.A. de C.V. Ensenada International Terminal S.A. de C.V. Executive Branch of the State of Baja California Nishikawa y Asociados S.A. de C.V	NMX-SAA-14001-IMNC-2004/ISO 14001:2004 Mexican Rule NMX-SAA-14050-IMNC-2009/ISO 14050:2009 NMX Mexican Rule -R-025-SCFI-2012 NMX Mexican Rule -R-025-SCFI-2012 Quality and Environmental Management System Manual API-SM-SGI-M-01 Record Control API-SM-SGI-P-02 Corrective and Preemptive Actions API-SM-SGI-P-05	Garbage storing, keeping maneuver areas clear, delimiting areas where garbage is generated and collecting garbage generated in a weekly basis.



**SCT**SECRETARÍA DE  
COMUNICACIONES  
Y TRANSPORTESCOORDINACIÓN GENERAL DE  
PUERTOS Y MARINA MERCANTIL

				Productos Procesados del Puerto S.A. de C.V. Unión de Comerciantes locatarios del mercado del mar S.A. de C.V. Unión de propietarios de carritos al servicio del turismo S.A. de C.V.		
<b>6</b>	Fumigatio n	Potential spill of hazardous waste.	Water and soil pollution	Acuacultura Integral de Baja California S.A. de C.V. Agencia Arjona S.A. de C.V. Baja Aqua Farms S.A de C.V. Cemex S.A. de C.V. Ensenada International Terminal S.A. de C.V Aquaculture Health and Safety in the State of Baja California Nishikawa y Asociados S.A. de C.V Productos Procesados del Puerto S.A. de C.V. Ribereños del Sauzal S.A. de C.V. Unión de Comerciantes locatarios del mercado del mar S.A. de C.V. Unión de propietarios de carritos al servicio del turismo S.A. de C.V.	NMX-SAA- 14001-IMNC- 2004/ISO 14001:2004 Mexican Rule NMX-SAA- 14050-IMNC- 2009/ISO 14050:2009 NMX Mexican Rule –R-025- SCFI-2012 NMX Mexican Rule –R-025- SCFI-2012 Quality and Environmental Management System Manual API-SM-SGI-M- 01 Record Control API-SM-SGI-P- 02 Corrective and Preemptive Actions API- SM-SGI-P-05	Usage of metal drums, drum tagging, delimitation of the storage areas. A specialized company authorized by SEMARNAT for the collection and final disposal of hazardous waste must be in charge of the gathering and final disposition of the hazardous wastes.
<b>7</b>	Cargo	Potential spill of urban solid waste.	Water and soil pollution	Ensenada International Terminal S.A. de C.V	NMX-SAA- 14001-IMNC- 2004/ISO 14001:2004 Mexican Rule NMX-SAA- 14050-IMNC- 2009/ISO 14050:2009 NMX Mexican Rule –R-025- SCFI-2012 NMX Mexican Rule –R-025- SCFI-2012	Storage of: garbage storing, keeping maneuver areas clear, delimiting areas where garbage is generated and collecting garbage generated in a weekly basis.

					Quality and Environmental Management System Manual API-SM-SGI-M-01 Record Control API-SM-SGI-P-02 Corrective and Preemptive Actions API-SM-SGI-P-05	
8	Storage and hauling	Potential spill of hazardous material	Soil, water, and air pollution	Ensenada International Terminal S.A. de C.V	NMX-SAA-14001-IMNC-2004/ISO 14001:2004 Mexican Rule NMX-SAA-14050-IMNC-2009/ISO 14050:2009 NMX Mexican Rule -R-025-SCFI-2012 NMX Mexican Rule -R-025-SCFI-2012 Quality and Environmental Management System Manual API-SM-SGI-M-01 Record Control API-SM-SGI-P-02 Corrective and Preemptive Actions API-SM-SGI-P-05	Industrial gases must be transported in cylinders or tanks in good condition and must be placed in fixed structures properly secured. Lubricants, fuels and chemicals must be stored and transported in tanks, appropriate extinguishing equipment must always be available and cleaning equipment must be available in the area.
9	Stacking	Potential leak of gases	Air pollution	Ensenada International Terminal S.A. de C.V	NMX-SAA-14001-IMNC-2004/ISO 14001:2004 Mexican Rule NMX-SAA-14050-IMNC-2009/ISO 14050:2009 NMX Mexican Rule -R-025-SCFI-2012 NMX Mexican Rule -R-025-SCFI-2012 Quality and Environmental Management	Industrial gases must be transported in cylinders or tanks in good condition and must be placed in fixed structures properly secured. Lubricants, fuels and chemicals must be stored and transported in tanks, appropriate extinguishing equipment must always be available and cleaning equipment must be available in the area.

					System Manual API-SM-SGI-M-01 Record Control API-SM-SGI-P-02 Corrective and Preemptive Actions API-SM-SGI-P-05	
<b>10</b>	Transport of material within the port	Potential spill of urban solid waste.	Scarcity of natural resources	Ensenada International Terminal S.A. de C.V	NMX-SAA-14001-IMNC-2004/ISO 14001:2004 Mexican Rule NMX-SAA-14050-IMNC-2009/ISO 14050:2009 NMX Mexican Rule -R-025-SCFI-2012 NMX Mexican Rule -R-025-SCFI-2012 Quality and Environmental Management System Manual API-SM-SGI-M-01 Record Control API-SM-SGI-P-02 Corrective and Preemptive Actions API-SM-SGI-P-05	Garbage storing, keeping maneuver areas clear, delimiting areas where garbage is generated and collecting garbage generated in a weekly basis.
<b>11</b>	Maintenance and repair of container	Production and spill of special handling wastes, solid urban wastes and hazardous wastes	Air pollution and scarcity of natural resources	Ensenada International Terminal S.A. de C.V	NMX-SAA-14001-IMNC-2004/ISO 14001:2004 Mexican Rule NMX-SAA-14050-IMNC-2009/ISO 14050:2009 NMX Mexican Rule -R-025-SCFI-2012 NMX Mexican Rule -R-025-SCFI-2012 Quality and Environmental Management System Manual API-SM-SGI-M-01	Garbage storing, keeping maneuver areas clear, delimiting areas where garbage is generated and collecting garbage generated in a weekly basis. Usage of metal drums, drum tagging, delimitation of the storage areas. A specialized company authorized by SEMARNAT for the collection and final disposal of hazardous waste must be in charge of the gathering and final



					Record Control API-SM-SGI-P-02 Corrective and Preemptive Actions API- SM-SGI-P-05	disposition of the hazardous wastes.
<b>12</b>	Technical Inspection	Risk of fire/explosi on	Soil, water, and air pollution	Acuacultura Integral de Baja California S.A. de C.V. Agencia Arjona S.A. de C.V. Baja Aqua Farms S.A de C.V. Cemex S.A. de C.V. Ensenada International Terminal S.A. de C.V Executive Branch of the State of Baja California Nishikawa y Asociados S.A. de C.V Productos Procesados del Puerto S.A. de C.V. Unión de Comerciantes locatarios del mercado del mar S.A. de C.V. Unión de propietarios de carritos al servicio del turismo S.A. de C.V.	NMX-SAA- 14001-IMNC- 2004/ISO 14001:2004 Mexican Rule NMX-SAA- 14050-IMNC- 2009/ISO 14050:2009 NMX Mexican Rule –R-025- SCFI-2012 NMX Mexican Rule –R-025- SCFI-2012 Quality and Environmental Management System Manual API-SM-SGI-M- 01 Record Control API-SM-SGI-P- 02 Corrective and Preemptive Actions API- SM-SGI-P-05	Electrical wiring must be breakage-free, with delimited work areas with appropriate fire extinguishers according to the type of fire. In case the fire can't be put off, the Surveillance and Fire Brigade personnel of the Port.
<b>13</b>	Tourist Services	Production and spill of special handling wastes, solid urban wastes, hazardous wastes and fuel consumptio n	Water and soil pollution	Baja Naval S.A de C.V. Inmobiliaria Plaza Villa del Rio S.A. de C.V. Viajes NormaBere S.A. de C.V. Ensenada Cruse Port Vilage S.A. de C.V.	NMX-SAA- 14001-IMNC- 2004/ISO 14001:2004 Mexican Rule NMX-SAA- 14050-IMNC- 2009/ISO 14050:2009 NMX Mexican Rule –R-025- SCFI-2012 NMX Mexican Rule –R-025- SCFI-2012 Quality and Environmental Management System Manual API-SM-SGI-M- 01 Record Control API-SM-SGI-P- 02	Garbage storing, keeping maneuver areas clear, delimiting areas where garbage is generated and collecting garbage generated in a weekly basis.

					Corrective and Preemptive Actions API-SM-SGI-P-05	
<b>14</b>	Supply of firefighting equipment and coolant gases.	Potential spill of hazardous material	Water and soil pollution	<p>Astilleros Progreso S.A de C.V. Baja Naval S.A de C.V. Gran Península S.A. de C.V. Grupo Peredia e Hijos S.A. de C.V. Infraestructura y Servicios Portuarios S.A. de C.V. Ensenada Cruse Port Vilage S.A. de C.V. Acuicultura Integral de Baja California S.A. de C.V. Agencia Arjona S.A. de C.V. Baja Aqua Farms S.A de C.V. Cemex S.A. de C.V. Ensenada International Terminal S.A. de C.V. Executive Branch of the State of Baja California Nishikawa y Asociados S.A. de C.V. Productos Procesados del Puerto S.A. de C.V. Ribereños del Sauzal S.A. de C.V. Unión de Comerciantes locatarios del mercado del mar S.A. de C.V. Unión de propietarios de carritos al servicio del turismo S.A. de C.V.</p>	<p>NMX-SAA-14001-IMNC-2004/ISO 14001:2004 Mexican Rule NMX-SAA-14050-IMNC-2009/ISO 14050:2009 NMX Mexican Rule -R-025-SCFI-2012 NMX Mexican Rule -R-025-SCFI-2012 Quality and Environmental Management System Manual API-SM-SGI-M-01 Record Control API-SM-SGI-P-02 Corrective and Preemptive Actions API-SM-SGI-P-05</p>	Industrial gases must be transported in cylinders or tanks in good condition and must be placed in fixed structures properly secured. Lubricants, fuels and chemicals must be stored and transported in tanks, appropriate extinguishing equipment must always be available and cleaning equipment must be available in the area.
<b>15</b>	Installation of Hydrocarbon Spill Containment Sea Barrier	Potential spill of urban solid waste, solid urban waste, hazardous material; risk of fire/explosion	Water and air pollution	<p>Astilleros Progreso S.A de C.V. Baja Naval S.A de C.V. Gran Península S.A. de C.V. Grupo Peredia e Hijos S.A. de C.V. Infraestructura y Servicios Portuarios S.A. de C.V. Ensenada Cruse Port Vilage S.A. de C.V.</p>	<p>NMX-SAA-14001-IMNC-2004/ISO 14001:2004 Mexican Rule NMX-SAA-14050-IMNC-2009/ISO 14050:2009 NMX Mexican Rule -R-025-SCFI-2012</p>	<p>Garbage storing, keeping maneuver areas clear, delimiting areas where garbage is generated and collecting garbage generated in a weekly basis. Usage of metal drums, drum tagging, delimitation of the storage areas. A specialized company</p>

				<p>Acuacultura Integral de Baja California S.A. de C.V.          Agencia Arjona S.A. de C.V.          Baja Aqua Farms S.A. de C.V.          Cemex S.A. de C.V.          Ensenada International Terminal S.A. de C.V.          Executive Branch of the State of Baja California          Nishikawa y Asociados S.A. de C.V.          Productos Procesados del Puerto S.A. de C.V.          Unión de Comerciantes locatarios del mercado del mar S.A. de C.V.          Unión de propietarios de carritos al servicio del turismo S.A. de C.V.</p>	<p>NMX Mexican Rule –R-025-SCFI-2012          Quality and Environmental Management System Manual          API-SM-SGI-M-01          Record Control          API-SM-SGI-P-02          Corrective and Preemptive Actions          API-SM-SGI-P-05</p>	<p>authorized by SEMARNAT for the collection and final disposal of hazardous waste must be in charge of the gathering and final disposition of the hazardous wastes. Industrial gases must be transported in cylinders or tanks in good condition and must be placed in fixed structures properly secured. Lubricants, fuels and chemicals must be stored and transported in tanks, appropriate extinguishing equipment must always be available and cleaning equipment must be available in the area. Electrical wiring must be breakage-free, with delimited work areas with appropriate fire extinguishers according to the type of fire. In case the fire can't be put off, the Surveillance and Fire Brigade personnel of the Port .</p>
--	--	--	--	---	--	---

### Performance indicators.

API Ensenada has environmental indicators that allow the company to achieve compliance with the applicable legislation while improving the environment through the actions related with the environmental aspects.

API Ensenada's environmental indicators also provide information showing whether the efficacy of the implemented environmental programs is being achieved and whether established goals adjustments for raising the bar in terms of achievement are necessary and achieve an ongoing improvement.

API Ensenada's environmental indicators are shown below:

Area	Person in charge	Critical activity/process	Procedure	Indicator Formula	Indicator
------	------------------	---------------------------	-----------	-------------------	-----------



Ecology	Head of the Department of Ecology	Environmental compliance	Surveillance and Supervision Protocol	Supervised operative control in Ensenada and Sauzal	IDO (Operation)
Ecology	Head of the Department of Ecology	Environmental compliance	Environmental programs	Programs' advancement average	IDG (Management)
Ecology	Head of the Department of Ecology	Environmental compliance	Surveillance and Supervision Protocol and Environmental programs	IDO and IDG average	IDA (Environmental Performance)
Ecology	Head of the Department of Ecology	Environmental compliance	Concessionaires' overseeing calendar/compliance verification overseeing regarding environmental clauses	Compliance level average on environmental areas supervised to concessionaires visited on the quarter.	CAD (Concessionaires' Environmental Compliance)

In addition to the abovementioned indicators, API has the following indicators supervised on field:

- Storing, shipping and unshipping maneuvers: Floating Repair works supervision and/or maneuvers in the courtyard
- Storing, shipping and unshipping maneuvers: Floating repair works and/or maneuvers in the yard
- Hazardous material and waste shipping: Hazardous Substances Handling Supervision List
- Works and maintenance: Environmental requirements and safety requirements for providers and contractor
- Concessionaires activities and service providers: Contractual Duties Compliance Overseeing Forms
- Purchases and services: Environmental requirements and providers' and contractors' safety.

API Ensenada's resources consumption and waste production are monitored:

- Water service.
- Electricity.
- Office paper.
- LP Gas
- Fuel
- Paper, cardboard and paper sent for recycling.
- Treated water
- Garbage
- Hazardous waste.

Environmental quality indicators:

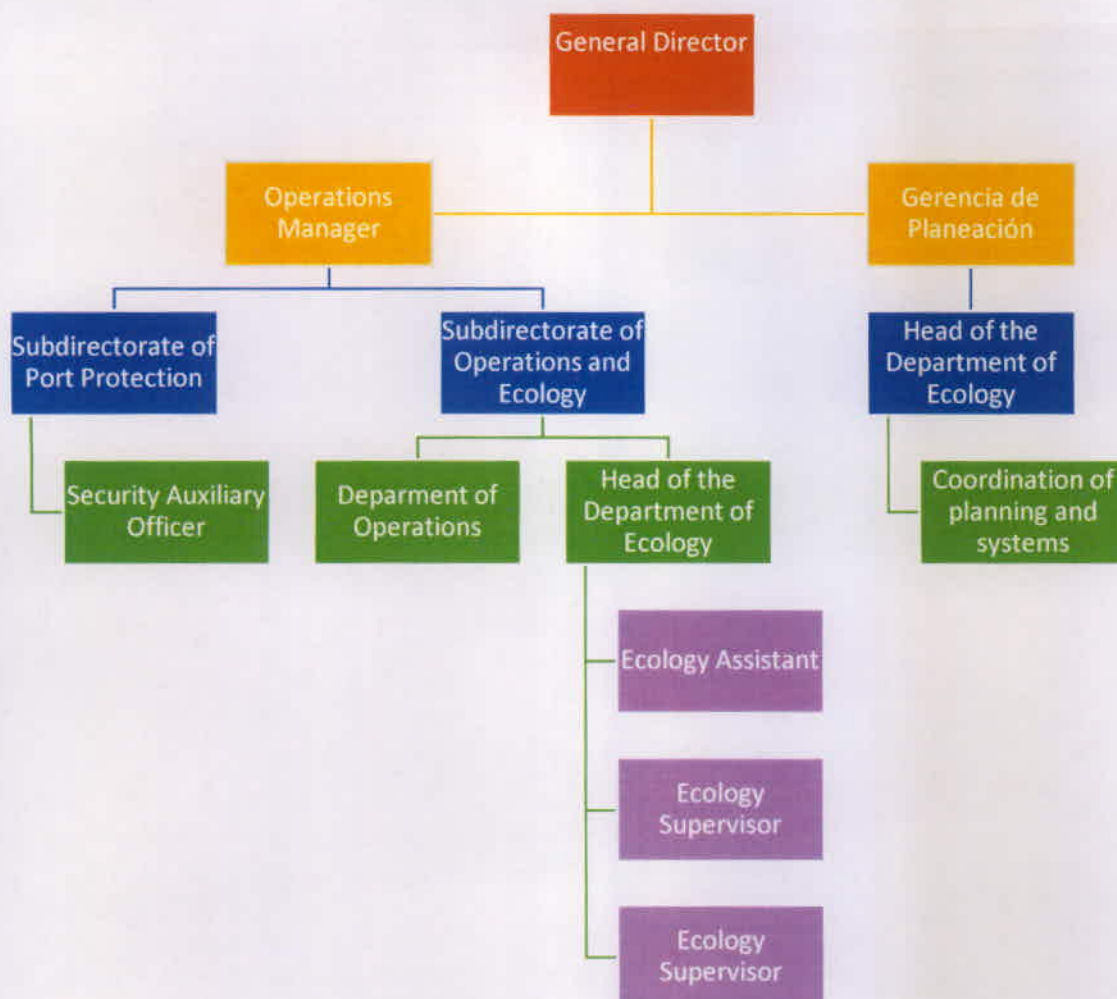
- Noise levels' monitoring
- Atmosphere's quality monitoring (airborne solid particles)
- Water quality monitoring within the port bay (fecal coliforms)

#### **d) API Ensenada's environmental management organization.**

API Ensenada has an organization which is separated in areas according to the functions and responsibilities of each of the different positions of the basic structure.

This company has an organizational manual for uniformly and transparently visualizing the authorized and functional organizational structure in force; it shows the flux of information between the areas clearly identifying functions and responsibilities of each one of the different positions in the basic structure, which enables to identify the lines of communication and command in the organization, users can identify the levels of responsibility on each area.

The organizational structure showing the persons directly related to API Ensenada's environmental system is shown below.



The objectives and functions of the positions which have direct responsibility with the environmental system are presented with detail in the PERS Environmental Report because the 2017 Environmental Report is undergoing a process of review.

#### **e) Environmental projects and good practices.**

The company carries out a number of activities aiming to preserve the environment, which are mentioned below in a summarized fashion. These activities, however, are presented with detail



in the PERS Environmental Report 2015, by reason of which the PERS Environmental Report 2015 is undergoing a process of review.

### **Good environmental practices manual.**

The main objective of the Good Environmental Practices Manual assigned to each productive chain were created with the purpose of providing the concessionaire with the information in the most practical way. Such manuals contain specific information for each productive chain, also known as business lines. This way, such manuals can be used for the preparation of brochures, handouts and infographics. API Ensenada's diffusion of these good environmental practices manuals is carried out exclusively by email.

The productive chains are:

- a) Port of Ensenada' Shipyards
- b) Marinas and Tourist Marinas
- c) Productive
- d) Bulk Material Terminal
- e) Cargo Terminal

### **Environmental Awards**

API Ensenada holds a number of environmental certifications. The company has undergone the task of acquiring said certifications as part of the actions aiming for continuous improvement in the Mexican environmental legislation compliance field. These certifications are supported by the Mexican environmental authority's verification entities. During the two-year validity of the PERS Certification, API Ensenada has acquired environmental certifications and awards that have set up API Ensenada as an environmentally responsible company.

The acquired certifications are shown below:

<b>Certification</b>	<b>Awarded by</b>	<b>Reference</b>
ISO 14001:2004	BSI Certificate of registration	Recent successful recertification of the 16 API companies.
Clean Industry Certificate / Environmental Compliance Level 2 (NDA2)	Ministry of Environment and Environmental Resources (SEMARNAT) and the Federal Commission for Environmental Protection (PROFEPA)	API Ensenada: First API in Mexico obtaining the NDA2 Clean Industry Award.
PERS Certification	ESPO/ECO PORT (The European Sea Ports Organisation)	API Ensenada: First API in Mexico obtaining the NDA2 Clean Industry Award.
Premio Marítimo de las Américas Award	Comisión Interamericana de Puertos (Interamerican Commission of Ports)	API Ensenada: First API obtaining the Socially Responsible Company Category.
Environmental Excellence Award (Edition 2017)	Ministry of Environment and Environmental Resources (SEMARNAT) and the Federal Commission for Environmental Protection (PROFEPA)	API Ensenada: First API in Mexico obtaining the Environmental Excellence Award.

Environmental Leadership Program Certificate for Competitiveness	Federal Commission for Environmental Protection (PROFEPA)	First obtained in 2012 and work in progress for obtaining the certification in 2017.
Clean Port Certificate	Federal Commission for Environmental Protection (PROFEPA)	Work is in progress for obtaining the certification in 2017.
Environmental Excellence Certification	Federal Commission for Environmental Protection (PROFEPA)	The company is the first API in obtaining this award.

### **Environmental Subcommittee of the Port of Ensenada.**

The Internal Program of Environmental System Follow Up and Preparation Subcommittee was organized on April 9th, 2000 and changed in 2004 into "Environmental Subcommittee".

The environmental sub-committee' meetings are held each three months. Concessionaires of the port community and the environmental authorities attend these meeting to deal with environmental issues. It is a forum for tackling with problems occurring on each premises or terminal. Agreements are worked out to reach a solution, awareness raising themes are approached, new environmental projects are conceived, results of studies and/or monitoring tasks performed in the port are presented.

### **Port of Ensenada Environmental Forum**

Amongst API Ensenada's goals is to cause cessionary companies and service providers to implement actions aiming to preserve the environment and prevent pollution. For four years, API Ensenada has been coordinating the realization of the "Environmental Forum" with the purpose of raising awareness within the port community regarding a topic with relation to the implementation of good environmental practices; the themes approached on these forums are:

1. Port Bay Sea Mammals Awareness Plan
2. Thoughts on Plastic Pollution
3. Water and Climate Change: Adaptation Strategies
4. El Niño 2015 Phenomenon Outlook for Baja California
5. Sustainable and Sustainable Development

### **Participation in Expositions**

API Ensenada has been approaching the community and fosters the relation between the port and the city. The company has been involved in several expositions organized by the company itself or the local environmental agencies with the purpose of create awareness in environmental topics as well as introduce the good environmental practices carried out in the port. The detailed list of API Ensenada's involvement in a number of expositions is presented with detail in the PERS Environmental Report because the 2017 Environmental Report is undergoing a process of review.

### **Diffusion Programs**

API Ensenada has set up the program titled "**Environmental Diffusion on Preschool and Elementary Schools for Children**" as part of the objectives and goals' compliance regarding the dissemination of environmental preservation topics. An Internal Diffusion Program



consisting in communicating by email within the company basic concepts, data, statistics in environmental field.

### **Cleansing campaigns**

The company has a program for the cleansing of streams and beaches of Ensenada. To this date, seven cleaning campaigns have been carried out. In addition to that, a total of 3.2 tons of trash have been collected to this date, thus preventing this litter to end up in the sea.

### **Equipment**

API Ensenada has equipment available for cessionary companies, service providers, port users and the community in general.

A list with the API's equipment available is shown below (section 1.6 showing with detail the features):

- *Spill Containment Barrier*
- *Waste water treatment plant.*
- *Firetrucks and tanker trucks*

### **Environmental monitoring**

API Ensenada is committed to achieve an improvement in the quality of the environment, API Ensenada is committed to improve and optimize natural resources consumption, minimize waste generation and implement actions aiming to prevent pollution and to preserve the environment, which are carried out as per the regulations and the environmental law.

1. *Atmosphere - Total airborne particles*
2. *Noise - Noise measurements in the Port of Ensenada*
3. *Water - Fecal coliforms in the Port of Ensenada*
4. *Water - Analysis of the water treated by the Waste Water Treatment Plant.*

The detailed list of API Ensenada's involvement in a number of expositions is presented with detail in the PERS Environmental Report because the 2017 Environmental Report is undergoing a process of review.

### **Environmental legislation in public works**

API Ensenada has several environmental impact authorizations pending for assessment, review and authorization by Government environmental agencies (Ministry of Environment and Natural Resources).

A list of the environmental impact authorizations obtained by Administración Portuaria Integral de Ensenada, S.A. de C.V.:

<b>NO</b>	<b>Project name</b>	<b>Issuance date and authorization resolution</b>
1	Dredging and Maintenance of the Port of Ensenada and Port of El Sauzal, B.C.	June de 2002.
2	Construction work of the new administrative building in Administración Portuaria Integral de (API) Ensenada, S.A. de C.V.: in the Port of Ensenada	November of 2009.



3	North Polygon Beach in the Port Facilities of El Sauzal.	November 2011.
4	60 meters expansion of the Port of El Sauzal N.1	November 2011.
5	Port of Ensenada breakwater expansion	June of 2015.
6	Construction of the Marine Control Center of the Port of Ensenada, B.C.	June de 2015.

### **Solution to current**

The company has collaborated in the solution of environmental problems occurring in the city of Ensenada which pose as the risk to the environmental system of the port of Ensenada.

An example of this is the problem of regarding the control of garbage haulage from the Ensenada and El Gallo Stream to the Port Bay of the Port of Ensenada, Baja California. To solve this problem, work meetings were held with bodies and institutions involved to make arrangements for the solution of this situation. The detailed list of API Ensenada's involvement in a number of expositions is presented with detail in the PERS Environmental Report because the 2017 Environmental Report is undergoing a process of review.

Another situation of concern is the vulnerability of water quality in the rad of Port of Ensenada, in this regard API Ensenada carried out a series of actions aiming to improve this environmental concern. The detailed list of API Ensenada's involvement in a number of expositions is presented with detail in the PERS Environmental Report because the 2017 Environmental Report is undergoing a process of review.

In both situations, positive results have been gained and follow-up is still being done to them.

### **a) Contact information.**

**Port:** Puerto de Ensenada, B.C. México.  
**Contact:** Ocean, Melissa Marron Cabrera.  
**Position:** Ecology Coordinator  
**Address:** Blvd. Teniente Azueta #110. - Port services  
**Postal Code:** 22800, Ensenada, B.C. México.  
**Telephone:** 52+(646) 1782860 ext 70726  
**Email:** [ecologia@puertoensenada.com.mx](mailto:ecologia@puertoensenada.com.mx)